

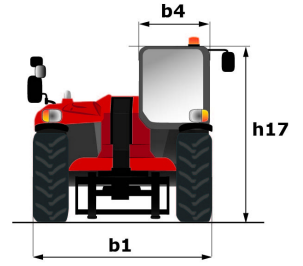
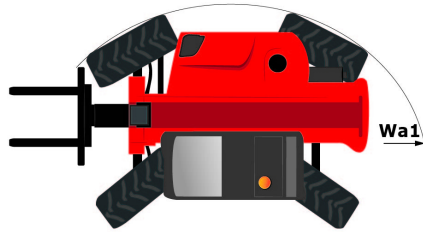
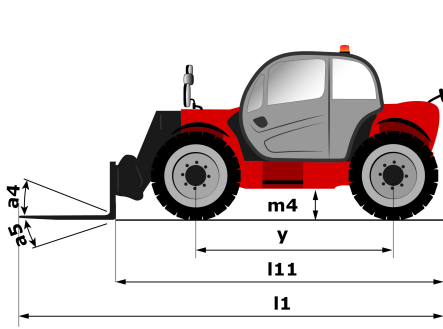
Technical sheet :

MXT 1740 K



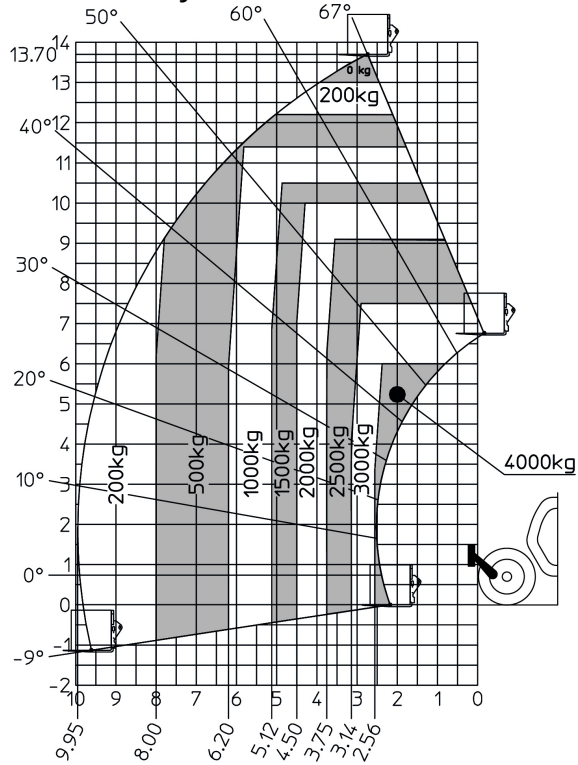
Capacities		Metric
Max. capacity	Q	4000 kg
Max. lifting height	h3	17.4 m
Max. Reach	l4	13.48 m
Weight and dimensions		
Overall length to carriage	l11	6.2 m
Overall width	b1	2.38 m
Overall height	h17	2.59 m
Wheelbase	y	2.9 m
Ground clearance	m4	0.38 m
Overall cab width	b4	0.85 m
External turning radius (over tyres)	Wa1	4.05 m
Unladen weight (with forks)		11275 kg
Forks length / width / section	l / e / s	1200 mm x 125 mm x 50 mm
Performances		
Lifting		13.6 s
Lowering		9.4 s
Extension		25 s
Retraction		14.1 s
Crowd		4.1 s
Dump		3.2 s
Engine		
Engine brand		Kirloskar
Engine model		KOEL 4R1040TA2 BSIII
Number of cylinders / Capacity of cylinders		4 - 4160 cm ³
Power (kW)		71.5 kW
Max. torque		377 Nm/m
Drawbar pull (Laden)		10200 daN
Transmission		
Transmission type		Torque Converter with Manual Gearbox
Number of gears (forward / reverse)		4 / 4
Max. travel speed (may vary according to applicable regulations)		28 km/h
Parking brake		Manual
Service brake		Oil-immersed multi-discs braking on front & rear axles
Hydraulics		
Hydraulic pump type		Gear pump
Hydraulic flow / Pressure		96.7 l/min / 250 Bar
Tank capacities		
Hydraulic oil		120 l
Fuel tank		80 l
Noise and vibration		
Noise at driving position (LpA)		92 dB(A)
Noise to environment (LWA)		110 dB(A)
Miscellaneous		
Steering wheels (front / rear)		4 / 4
Safety		Standard EN 15000
Controls		Monolever

Dimensional drawing

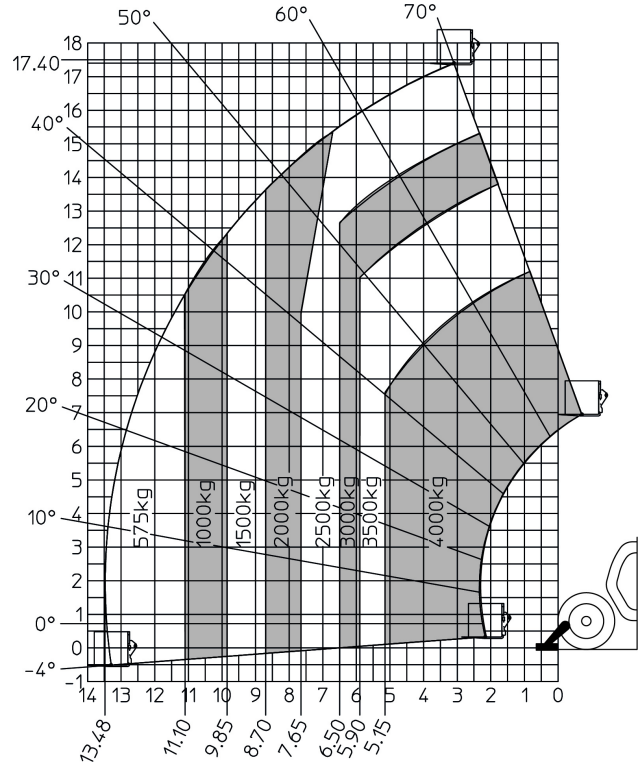


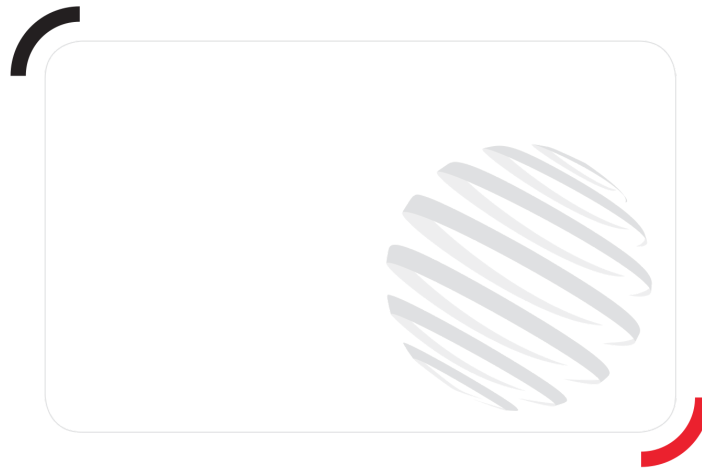
Load chart

Machine on tyres with forks - with Metric



Machine on stabilizers with forks Metric





Siège Social

430 rue de l'Aubinière - 44150 Ancenis Cedex - France

Tel: +33(0)2 40 09 10 11 - Fax: +33 (0)2 40 09 10 97

www.manitou.com



This brochure describes versions and configuration options for Manitou products which may be fitted with different equipment. The equipment described in this brochure may be standard, optional or not available depending on version. Manitou reserves the right to change the specifications shown and described at any time and without prior warning. The manufacturer is not liable for the specifications given. For more information, contact your Manitou dealer. Non-contractual document. Product descriptions may differ from actual products. List of specifications is not comprehensive. The logos and visual identity of the company are the property of Manitou and may not be used without authorisation. All rights reserved. The photos and diagrams contained in this brochure are provided for information only.

MANITOU BF SA - Limited company with board of directors - Share capital: 39,668,399 euros - 857 802 508
RCS Nantes